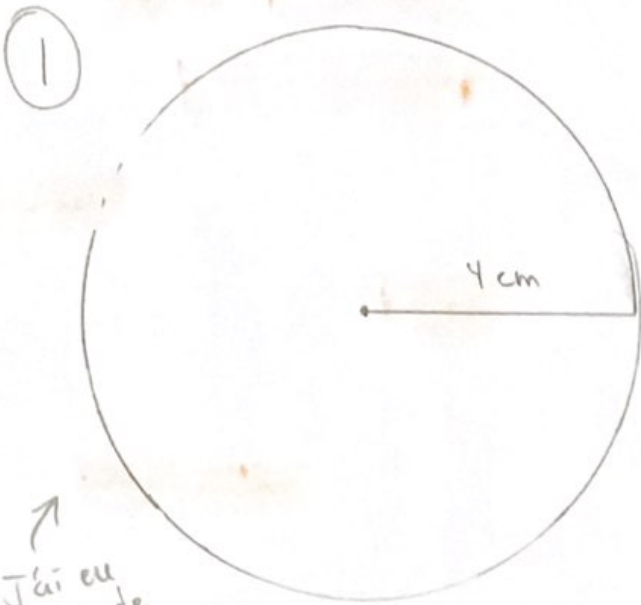


7<sup>e</sup> année - Six cercles à construire, +  
aire + circonférence à trouver



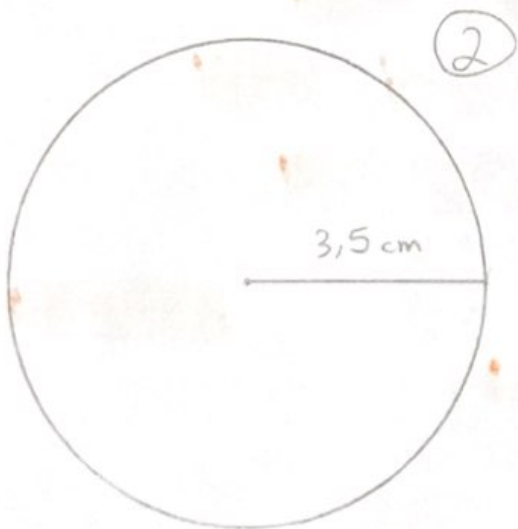
$$\text{Rayon} = 4 \text{ cm}$$

$$\text{Diamètre} = 8 \text{ cm}$$

$$\begin{aligned} \text{Circonférence} &= \pi \times D \\ &= \pi \times 8 \\ &= 25,13 \text{ cm} \end{aligned}$$

$$\begin{aligned} \text{Aire} &= \pi r^2 \\ &= \pi 4^2 \\ &= \pi 16 \\ &= 50,27 \text{ cm}^2 \end{aligned}$$

↗  
J'ai eu  
un peu de  
difficulté avec  
mon premier! C'est  
normal!



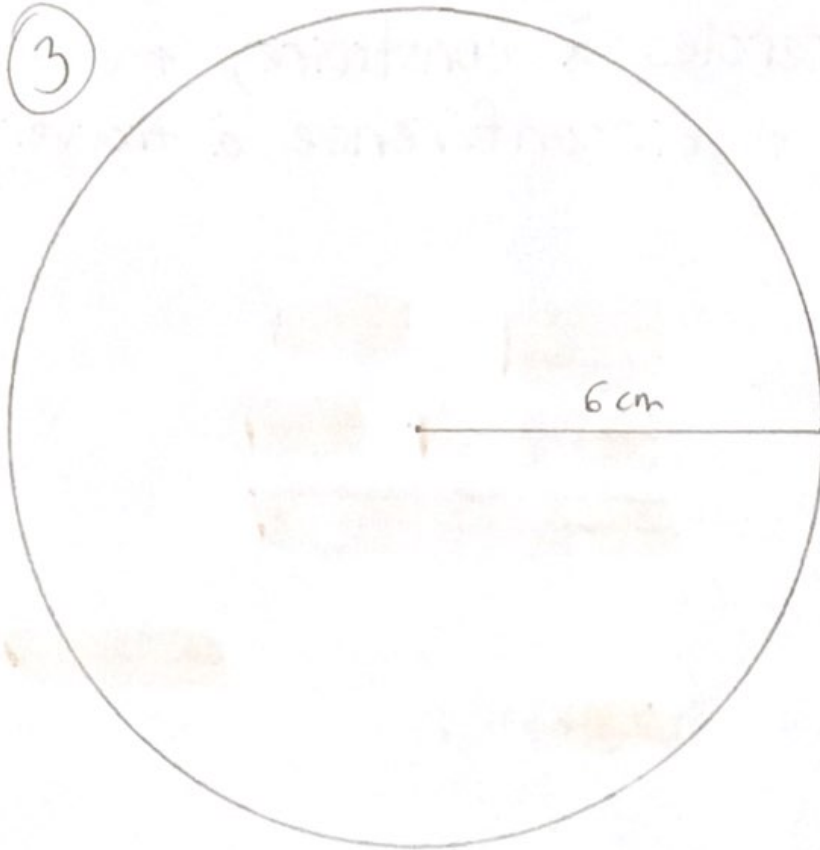
$$\text{Rayon} = 3,5 \text{ cm}$$

$$\text{Diamètre} = 7 \text{ cm}$$

$$\begin{aligned} \text{Circonférence} &= \pi D \\ &= \pi 7 \\ &= 21,99 \text{ cm} \end{aligned}$$

$$\begin{aligned} \text{Aire} &= \pi r^2 \\ &= \pi 3,5^2 \\ &= \pi 12,25 \\ &= 38,48 \text{ cm}^2 \end{aligned}$$

3



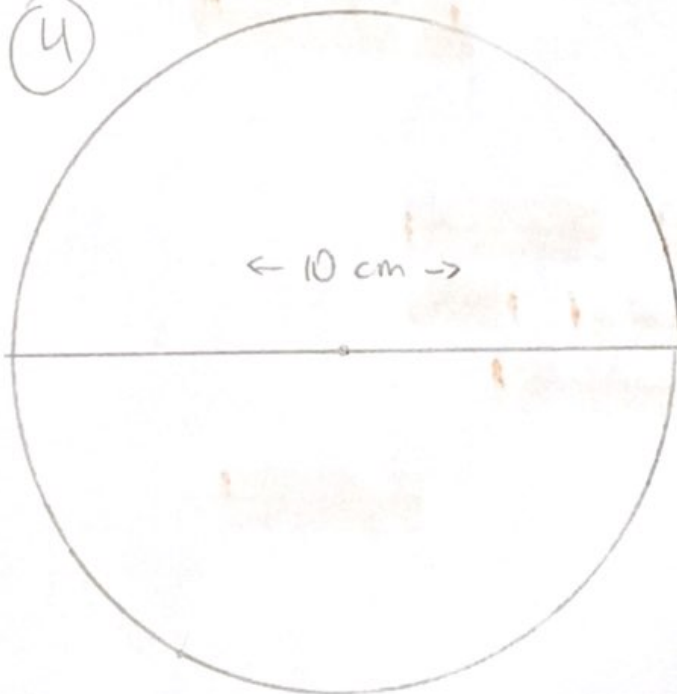
$$\text{Rayon} = 6 \text{ cm}$$

$$\text{Diamètre} = 12 \text{ cm}$$

$$\begin{aligned} \text{Circonférence} &= \pi D \\ &= \pi 12 \\ &= 37,70 \text{ cm} \end{aligned}$$

$$\begin{aligned} \text{Aire} &= \pi r^2 \\ &= \pi 6^2 \\ &= \pi 36 \\ &= 113,10 \text{ cm}^2 \end{aligned}$$

4



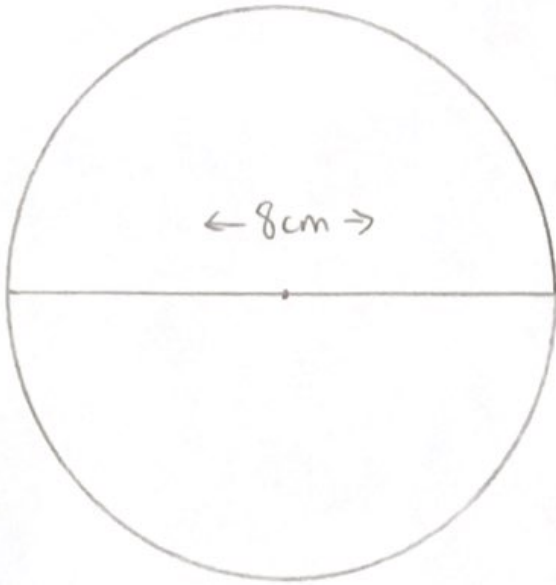
$$\text{Rayon} = 5 \text{ cm}$$

$$\text{Diamètre} = 10 \text{ cm}$$

$$\begin{aligned} \text{Circonférence} &= \pi D \\ &= \pi 10 \\ &= 31,42 \text{ cm} \end{aligned}$$

$$\begin{aligned} \text{Aire} &= \pi r^2 \\ &= \pi 5^2 \\ &= \pi 25 \\ &= 78,54 \text{ cm}^2 \end{aligned}$$

5



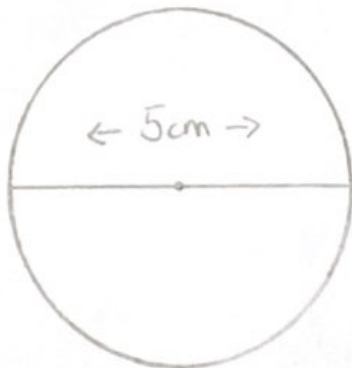
$$\text{Rayon} = 4 \text{ cm}$$

$$\text{Diamètre} = 8 \text{ cm}$$

$$\begin{aligned} \text{Circonférence} &= \pi D \\ &= \pi 8 \\ &= 25,13 \text{ cm} \end{aligned}$$

$$\begin{aligned} \text{Aire} &= \pi r^2 \\ &= \pi 4^2 \\ &= \pi 16 \\ &= 50,27 \text{ cm}^2 \end{aligned}$$

6



$$\text{Rayon} = 2,5 \text{ cm}$$

$$\text{Diamètre} = 5 \text{ cm}$$

$$\begin{aligned} \text{Circonférence} &= \pi D \\ &= \pi 5 \\ &= 15,71 \text{ cm} \end{aligned}$$

$$\begin{aligned} \text{Aire} &= \pi r^2 \\ &= \pi 2,5^2 \\ &= \pi 6,25 \\ &= 19,63 \text{ cm}^2 \end{aligned}$$