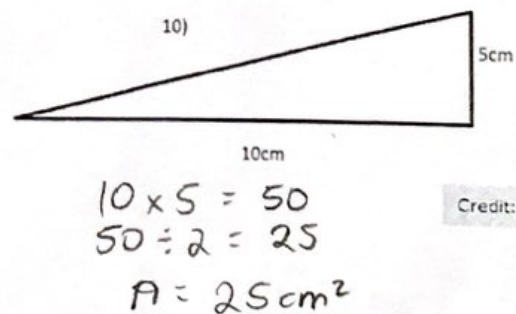
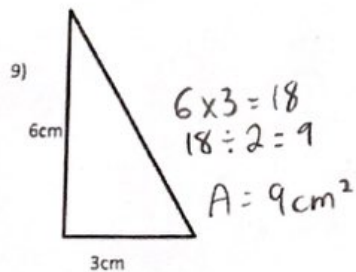
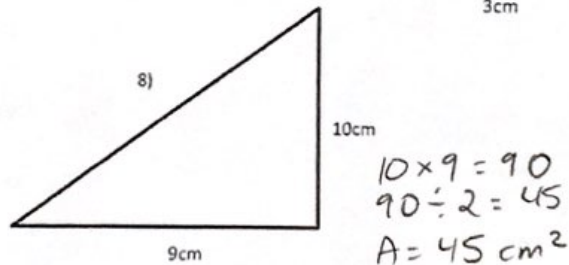
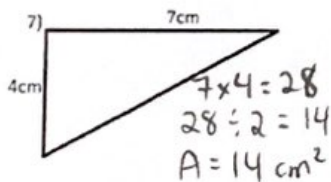
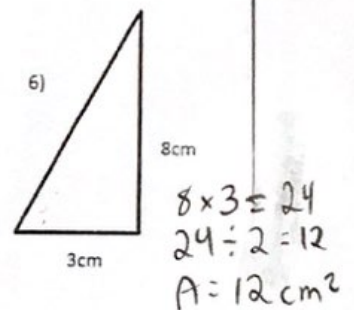
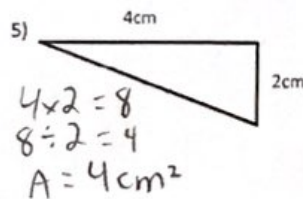
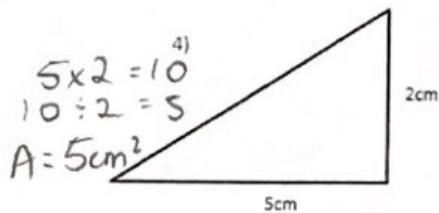
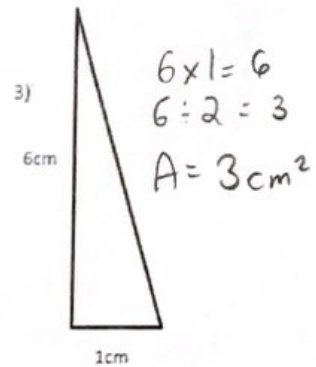
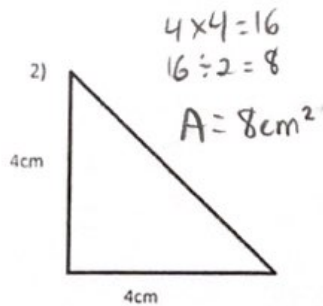
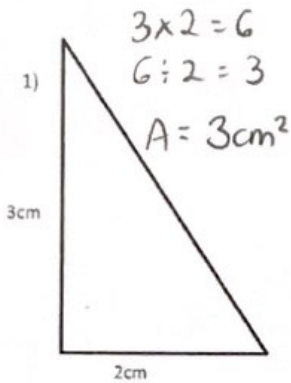


Réponses

Aire d'un triangle Formule: $Aire = b \times h \div 2$





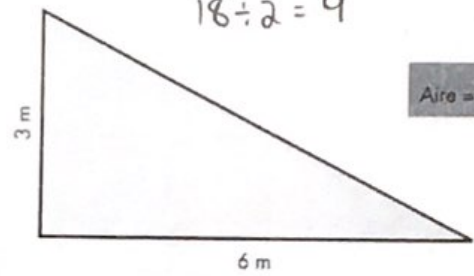
Le triangle d'or

Consignes

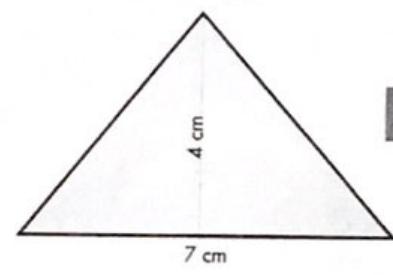
Calcule l'aire des triangles suivants.
N'oublie pas la formule qui permet de calculer l'aire d'un triangle :

$$\frac{\text{Base} \times \text{Hauteur}}{2}$$

$$6 \times 3 = 18$$
$$18 \div 2 = 9$$

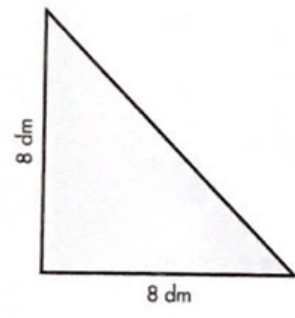


Aire = 9 m²



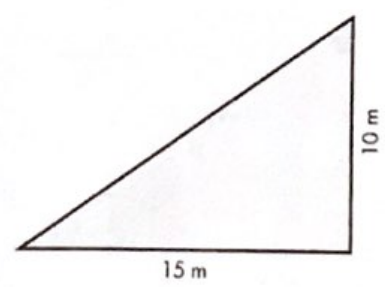
Aire = 14 cm²

$$7 \times 4 = 28$$
$$28 \div 2 = 14$$



Aire = 32 dm²

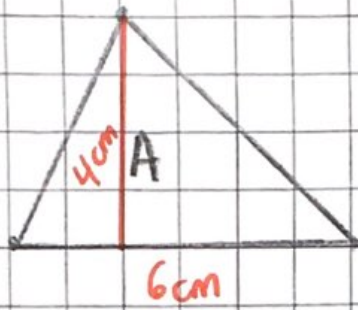
$$8 \times 8 = 64$$
$$64 \div 2 = 32$$



Aire = 75 m²

$$10 \times 15 = 150$$
$$150 \div 2 = 75$$

24/01/13

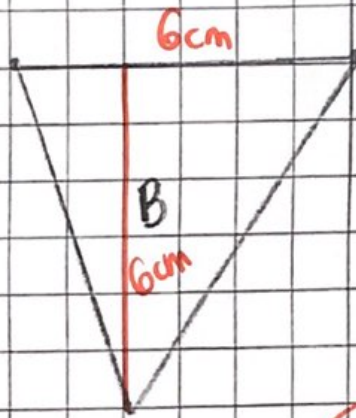


$$A = \frac{b \times h}{2}$$

$$A = \frac{6 \times 4}{2}$$

$$A = \frac{24}{2}$$

$$A = 12 \text{ cm}^2$$



$$A = \frac{b \times h}{2}$$

$$A = \frac{6 \times 6}{2}$$

$$A = \frac{36}{2}$$

$$A = 18 \text{ cm}^2$$

Explore p. 143

A = triangle

A =